



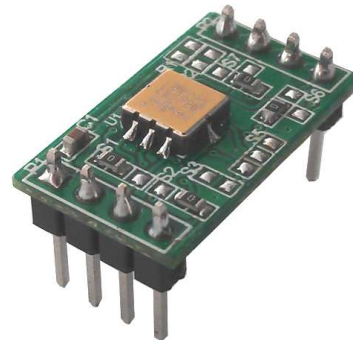
MXD6235MP-B Prototyping Board

MXD6235MP-B

GENERAL DESCRIPTION

The MXD6235MP-B provides a convenient and easy way to evaluate and prototype with the MXD6235MP dual axes accelerometer. The accelerometer and passive components are SMT mounted on the board. Each pin of the MXD6235MP SMT device is brought out to standard 0.10 inch on center connections on the sides of the prototyping board. Wires can either be soldered directly to the prototyping board or the DIP pins can be used with widely available breadboard kits.

For complete performance specifications of the MXD6235MP refer to the MXD6235MP datasheet.

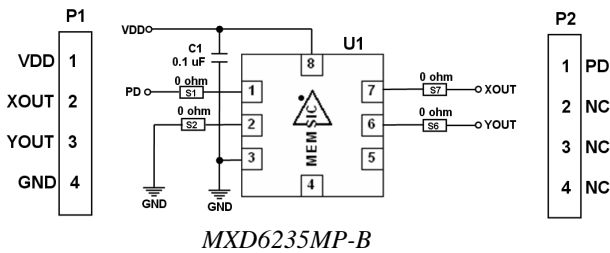


MXD6235MP-B

PIN DESCRIPTION

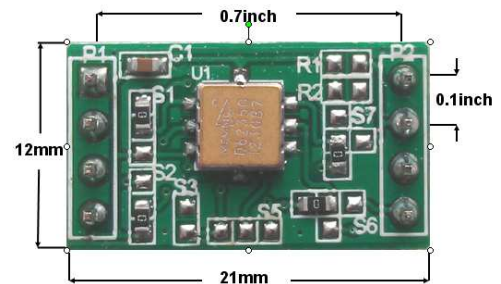
Pin	Name	Description
P1-1	VDD	Supply Voltage 2.7 to 3.6 V
P1-2	XOUT	X-Channel Duty Cycle Output
P1-3	YOUT	Y-Channel Duty Cycle Output
P1-4	GND	Ground
P2-1	PD	Power Down Pin
P2-2	NC	No Connect
P2-3	NC	No Connect
P2-4	NC	No Connect

SCHEMATIC OF THE MXD6235MP-B



MXD6235MP-B

PCB CONNECTION DIMENSIONS



MXD6235MP-B

Information furnished by MEMSIC is believed to be accurate and reliable. However, no responsibility is assumed by MEMSIC for its use, nor for any infringements of patents or other rights of third parties, which may result from its use. No license is granted by implication or otherwise under any patent or patent rights of MEMSIC.

©MEMSIC, Inc.
 One Technology Drive, Suite 325, Andover, MA, 01810, USA
 Tel: +1 978 738 0900 Fax: +1 978 738 0196
 www.memsic.com